

Brazilian System on Conformity Assessment

*U.S.- Brazil Commercial Dialogue
Digital Video Conference Series*

Alfredo Lobo

*Director of Quality
Inmetro*

João Jornada

*President
Inmetro*

Marcos Oliveira

*Accreditation Coord.
Inmetro*

Inmetro - Main Activities

Scientific and Industrial Metrology;

Legal Metrology;

Conformity Assessment;

Accreditation of Certification & Inspection Bodies and Testing & Calibration Laboratories;

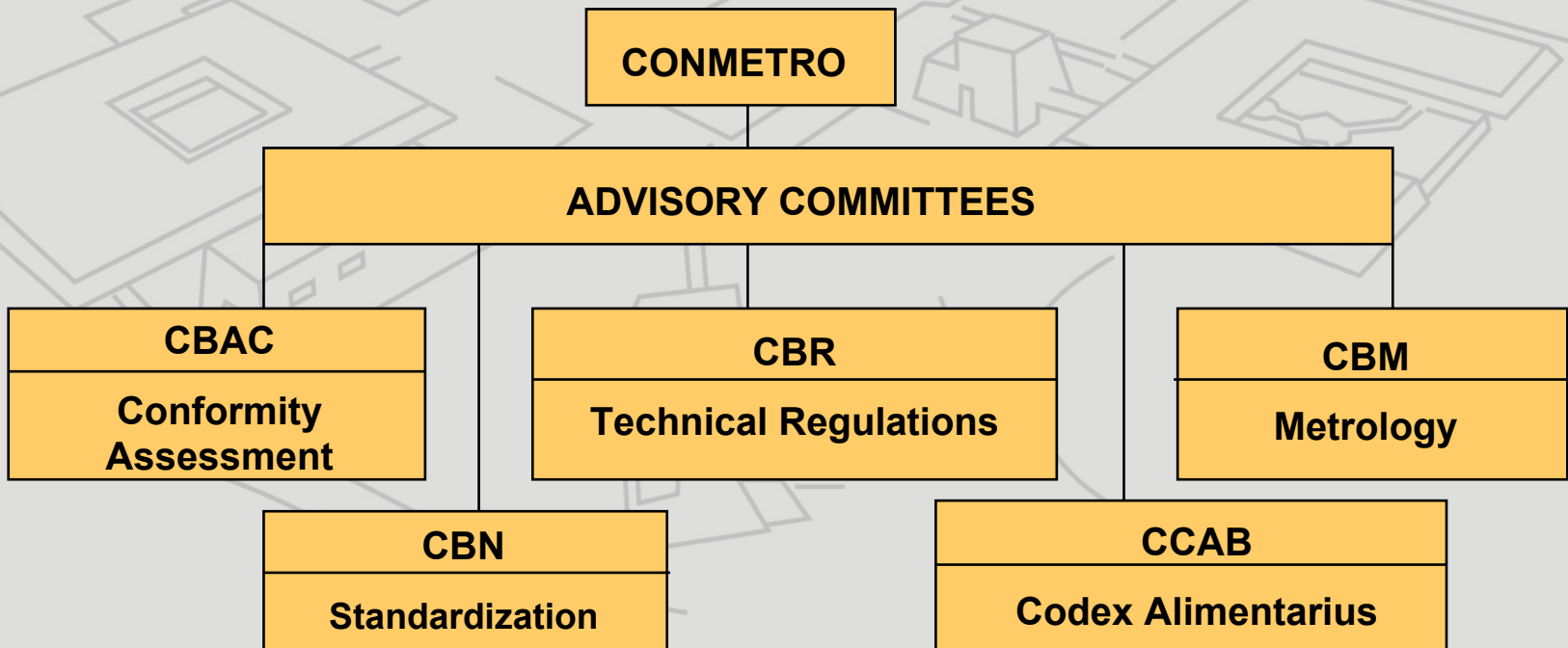
Enquiry Point for the Agreement on Technical Barriers to Trade (WTO).

Inmetro - Mission

Improve quality of life and economic competitiveness through metrology and quality.

Brazilian System on Conformity Assessment

Conformity Assessment Approach
“systemic, strategic and structuring”



Conformity Assessment Brazilian System

Usually in Brazil, conformity assessment activities are operated in a systemic approach.

There are some official initiatives, performed by Regulatory Agencies operating outside the system.

However, there are some other voluntary initiatives, performed by private sector.

Conformity Assessment Programs outside SBAC

There are 27 Regulatory Agencies, within and outside SBAC.
Examples:

Public Area

Ministry of Health

Labs accredited by regulatory agency

Ministry of Agriculture

Bovine traceability

Labs accredited by regulatory agency

Private Area

Coffee certification

Peanuts certification

OSHA certification (Occupational
Safety & Health Administration)

FSC (Forest Stewardship Council)

Brazilian System on Conformity Assessment

Conformity Assessment Approach

Brazilian Program of Conformity Assessment - PBAC

- **Strategic Projects (Structural)** →
- **Quadrennial Action Plan** →
- **Other strategic issues** →

Brazilian System on Conformity Assessment

Conformity Assessment Approach - cont.

Strategic Projects (Structural)

- Systemization on divulging the activity on Conformity Assessment (CA);
- Use of CA marks in the scope of SBAC;
- Invigoration of SMEs participation in the scope of SBAC;
- Qualification and certification of professionals operating in CAB;
- CA information dissemination in schools and universities.

Brazilian System on Conformity Assessment

Conformity Assessment Approach - cont.

Quadrennial Action Plan

Criteria for Identification and Prioritization of Demands

Health, Safety and Environment

Fair Trading Promotion

Strengthening Consumption
relationship

Market access improvement

Conformity Assessment Programs in Progress

Currently: 55 programs

Highlights: Strings of Sisal, Fighting Fruit Flie
Process, Cachaça, Social Responsibility,
Adventure Tourism, Honey, Hazardous
Products Packing, Flowers and Ornamental
Plants, Organic Products, Equipment for Wat
Quality Improvement, Plastic Chair, School
Goods. Mechanism for Children Safety. etc.

Brazilian System on Conformity Assessment

Conformity Assessment Approach - cont.

- **Other strategic issues**
 - Electromagnetic interference
 - Life cycle assessment
 - Notified Body
 - Essential requirements
 - Integrated certification of management systems

Conformity Assessment Program

- **Typical Content**

- Standard Basis (what to assess)

- Regulation on Conformity Assessment (How to assess)

- **Development Phases**

- Study of Technical Viability

- Elaboration

- Attended Operation

- Evaluation and Improvement

Conformity Assessment Program – cont.

- **Conformity Assessment Mechanisms**

Certification

Suppliers Declaration

Inspection

Testing

- **Market Surveillance**

Inspection

Conformity Verification

External Agents

Conformity Assessment - Numbers

- **Conformity Assessment – Mandatory Programs: 76**
- **Products voluntarily certified: 208**
- **Programs in progress: 55, totaling 97 products**
- **Brands in the market with Inmetro's mark:**
 - ✓ **Mandatory: 14.100**
 - ✓ **Voluntary: 1.104**
 - ✓ **Companies: 4.396**

Cgcre/Inmetro Accreditation Activities

Certification Bodies

- ✓ Products - ISO/IEC Guide 65
- ✓ Personnel - ISO/IEC 17024
- ✓ Management System - ISO/IEC Guides 62 and 66 (transition to ISO/IEC 17021)
- **Inspection bodies - ISO/IEC 17020**
- **Testing and calibration labs - ISO/IEC 17025**
- **Laboratories performing studies - GLP**
- **Clinical labs - Cgcre's standard**

Cgcre/Inmetro Accreditation Activities – cont.

The accreditation scope for management systems certification bodies comprehend the 39 scopes defined by the International Accreditation Forum - IAF, complemented by the NACE Code;

The accreditation scope for product certification bodies are granted based on a standard or technical regulation, for each single product;

The accreditation scopes for testing laboratories are granted based on a standard or a technical regulation, for each single product and test;

The accreditation scopes for GLP laboratories are granted based on OECD Protocols;

The accreditation scopes for calibration laboratories specify measurement standards and instruments;

The accreditation scopes for persons certification and inspection bodies are granted for specific activities and fields, respectively.

Number of Accredited Laboratories

Calibration 178

Testing 234

Accredited Inspection Bodies

Modality	Type	Qnt.
Inspection Bodies	Vehicle Safety	214
	Hazardous Products Transport	25
	Non-Destructive Testing (new)	0

Accredited Inspection Bodies

Modality	Type	Qnt.
Certification Bodies	Products	54
	QMS (ISO 9001)	34
	EMS (14001)	20
	QMS for Aerospace	3
	Forest Certification	2
	PBQP-h	9
	HACCP	1
	Social Accountability	1
	Personnel	8

Numbers of Accredited Scopes

Types of accreditation	Scopes
QMS	39
EMS	39
Products	270
Persons	11
Inspection	32
QMS for Aerospace	31
Forest Certification	2
PBQP-h	1
HACCP	11
Social Accountability	1

Participation in MLAs

- **IAF** - QMS (1998) and EMS (2006)
(Application for products in March 2006)
- **ILAC** - Testing and calibration (2000)
- **EA** - Testing and calibration (2001)
- **IAAC** - QMS, testing and calibration (2002)
- **OECD** - Application for GPL in January 2007

Foreign CABs accredited by Cgcre/Inmetro

- **RINA (Ita);**
- **ABS, UL and PJR (USA)**
- **UNIT and LATU (Uru)**
- **Inspectorate, IRAM and OIA (Arg)**
- **FONDONORMA (Ven)**
- **ECO-LÓGICA (CRI)**
- **TORNEL (MEX)**

Recognition by Sector

<i>Year</i>	<i>Sector</i>	<i>Forum</i>
<i>2004</i>	<i>Forest</i>	<i>PEFC</i>
<i>2002</i>	<i>Aerospace</i>	<i>AAQG</i>
<i>2002</i>	<i>Fruits and vegetables</i>	<i>Eurepgap</i>

Cross Frontier Activities

In 2006, Cgcre/Inmetro adopted a cross-frontier policy with: Sincert, UKAS, ANAB, OAA, OUA, SFOH (formal or informal arrangements).

Actions:

- use of personnel assessment provided by the local IAF MLA signatory AB;
- joint assessment with the local IAF MLA signatory AB;
- acceptance of assessments results of the local AB;
- joint evaluations for GLP with the SFOH.

Products for which accreditation by MRA partners are accepted

Regulator - MINISTRY OF HEALTH

- Electro-medical equipment

Regulator - INMETRO'S DIRECTORATE OF QUALITY - (DQUAL)

- New tires for automobiles, trucks and buses
- New tires for motorcycle and autocycle
- Electric equipment for potentially explosive atmosphere, in the conditions of gases and inflammable steams

Products for which accreditation by MRA partners are accepted

Circuit Breaker

Plugs and sockets for household and similar use

Potency cable with extruded solid insulation of PVC - rate up to 1KV

Electronic reactor fed in alternating current, for tubular fluorescent lamp

Household switches (and similar use) for fixed electric facilities - rate up to 440V

Toy – Child Safety

Components for installation of natural gas system for vehicles

Other products

Acceptance of calibration and testing

Traceability Policy – Acceptance of calibration certificates from labs accredited by MRA partners

Testing – accreditation accepted by

- ANA (water)
- ANATEL (telecommunications)
- ANP (petroleum and gas)
- ANVISA (health)
- DENATRAN (traffic)
- MINISTRY OF TRANSPORTS
- MINISTRY OF HEALTH

Acceptance of calibration and testing

- MINISTRY OF ENVIRONMENT
- INMETRO'S DIRECTORATE OF QUALITY - (DQUAL)

Cgcre/Inmetro promotes the acceptance of test reports by industry and regulators.